

EPALL 2008

6th El Paso Adult Learning and Literacy Conference



***Re-energizing our Practice:
New Paths for Adult Education***

**University of Texas
at El Paso
November 21 – 22, 2008**

***Presented by:
Far West Project GREAT***

TABLE OF CONTENTS

<i>Far West Project GREAT Advisory Council and Staff</i>	3
<i>Welcome from the Far West Project GREAT Center</i>	4
<i>Friday Sessions at a Glance</i>	5
<i>Saturday Sessions at a Glance</i>	7
<i>Conference Presentation Descriptions</i>	8
<i>Directory of Exhibitors</i>	17
<i>Directory of Presenters and profiles</i>	18
<i>Map of Meeting Rooms</i>	23

INSERTS

Overall Conference Evaluation

Conference Attendance Sheets (Friday and Saturday)



Far West Project GREAT Advisory Council

Ana Herrera	— San Jacinto Adult Learning Center
Ana Macias	— University of Texas at El Paso - <i>West Project GREAT</i>
Blanca Andrade	— San Jacinto Adult Learning Center
Ernesto Mata	— AVANCE - El Paso Chapter
Fred Anaya	— Ysleta Community Learning Center
Ignacio Solis	— Clint Independent School District
Julia Correa	— Canutillo Independent School District - <i>Even Start Program</i>
Maria Cesnik	— Ysleta Community Learning Center
Martha Serna	— Socorro Community Learning Center
Oswaldo Grijalva	— Socorro Community Learning Center - <i>Even Start Program</i>
Rena Miller	— Opportunity Center for the Homeless
Sanjay Mathur	— AVANCE - El Paso Chapter
Sheryl Jefferson	— Texas LEARNS
Teofilo Ugalde	— Upper Rio Grande Workforce Solutions

Far West Project GREAT Staff Members

Eduardo Honold, Grant Coordinator
Lety Jones, Administrative Specialist
Mary Jo Ochoa, Grant Specialist

Special thanks to:

*Socorro Independent School District
El Paso Independent School District
Ysleta Independent School District*

*South Central Project GREAT Center
Texas LEARNS
Texas Center for Adult Literacy and Learning*

6th Annual El Paso Adult Learning and Literacy Conference

University of Texas at El Paso

November 21 - 22, 2008

Dear Participants,

It is my pleasure to welcome you to the sixth annual El Paso Adult Learning and Literacy Conference. We are very excited about the 39 sessions we have for you this year, many of which address our theme for the Conference "Reenergizing our Practice: New Paths for Adult Education."

As in the past, EPALL highlights some of the best practices of our local instructors and the knowledge and experience of seasoned adult education practitioners from across the state and the nation. It is our honor to create a space where new ideas and strategies for promoting learning among adults can be shared.

Our staff has worked very hard to make this Conference as user-friendly as possible. Please let us know if there is anything we can do to make this a positive learning experience. And let us know how we can improve our Conference next year by filling out the gold-colored evaluations before you leave.

Have a great EPALL 2008 Conference!

Warmest regards,

Eduardo Honold
Far West GREAT Center Coordinator

WELCOME!

CONFERENCE SESSIONS AT A GLANCE

Friday, November 21, 2008

FRIDAY, NOVEMBER 21, 2008			
7:30 – 8:20 a.m.	Registration, Continental Breakfast and Vendor Exhibits		Lobby Area
VENDORS/PUBLISHERS			
Cambridge University Press	Heinle Cengage Learning	McGraw-Hill ESL	ALTA Book Center
McGraw-Hill Contemporary	Steck-Vaughn Publishers	Pearson Longman	Literacy Texas
TIME	SESSIONS	PRESENTER	LOCATION
8:20 – 9:50 a.m. (1 hr. and 30 mins.)	A Tale of Two Teachers, or, Back From the Brink of Burnout	Laurel Pollard	Tomas Rivera Conference Ctr.
10:00 – 10:50 a.m. (50 mins.)	1. Reaching Adult Learners with Distance Education	Marty Pitts <i>McGraw-Hill Contemporary</i>	Ray Room
	2. Applying Sheltered Instruction Observation Protocol in your ESL Class	Inés Smith <i>Eastern New Mexico University-Roswell</i>	Smiley Room
	3. Teaching Test Taking Strategies and Vocabulary	Diane Stern <i>San Jacinto ALC</i>	Wiggins Room
10:00 – 11:50 a.m. (1 hr. and 50 mins.)	4. I showed up – What MORE do you want?	Darlene Redclift <i>South Central Project GREAT</i>	Elkins Room
	5. Student Retention: Strategies for Encouraging and Supporting Student Persistence	Carol Speigl and Alex Baez <i>Texas Prof. Dev.</i>	Templeton Suite
	6. FUNdamentals of Active Teaching and Learning	Barbara Baird <i>El Paso Com. College</i>	University Suite
	7. Trauma and Learning: What have we Learned?	Janet Isserlis <i>Rhode Island Ad. Ed. PD Ctr.</i>	Barry Room
11:00 – 11:50 a.m. (50 mins.)	8. Workplace Literacy – Communicating at Work	Rebecca Davis <i>South Region GREAT Ctr.</i>	Ray Room
	9. Classroom Debates for ESL Students	Rosanna Loya and Michael Saenz <i>Socorro ISD</i>	Wiggins Room
	10. Building Academic Skills	Mary Louise Baez <i>Cambridge University Press</i>	Smiley Room
12:00 – 1:00 p.m.	EPALL 2008 Luncheon	Tomas Rivera Conference Ctr.	
1:10 – 2:00 p.m. (50 mins.)	11. Taking the Puzzle out of ESL Adult Education	Tracy Springer <i>Heinle Cengage Lrng</i>	Smiley Room
	12. Large Classes and Relationship Dynamics	Arturo Muro and Patty Ramirez <i>AVANCE</i>	Wiggins Room
	13. The Whole World is My Classroom!	Laurel Pollard	Ray Room

CONFERENCE SESSIONS AT A GLANCE

Friday, November 21, 2008 (Continued)

TIME	SESSIONS	PRESENTER	LOCATION
1:10 – 3:00 p.m. <i>(1 hr. and 50 mins.)</i>	14. Teaching Objectives for the Redesigned Naturalization Test	Rachael Shaw <i>U.S. Citizenship and Immigration Services</i>	Barry Room
	15. Using Questioning Strategies in the Adult Education Classroom to Increase Critical Thinking Skills of Students	Rene Coronado <i>South Central Project GREAT</i>	University Suite
	16. Transitioning English Language Learners from ESL to ABE	Anestine Hector-Mason, Dahlia Shaewitz, Larry Condelli <i>American Institutes for Research</i>	Elkins Room
	17. Using Literature to Teach ESL	Carol Speigl and Alex Baez <i>Texas Prof. Dev.</i>	Templeton Suite
2:10 – 4:00 p.m. <i>(1 hr. and 50 mins.)</i>	18. Raising Scores on the GED Tests	Marty Pitts <i>McGraw-Hill Contemporary</i>	Smiley Room
	19. It's in the Bag! Traveling Resource Kits	V. Kay Vaccaro <i>Harris County Dept. Ed.</i>	Wiggins Room
	20. Using Newspaper Ads to Teach Adults Math <i>(To be repeated on Saturday)</i>	Audrey Nelson-Ricks <i>Coastal Project GREAT</i>	Ray Room
3:10 – 4:00 p.m. <i>(50 mins.)</i>	21. Wizardy with Exercises for Beginners	Laurel Pollard	University Suite
	22. Balancing Grammar and Vocabulary for ESL Beginning Students	Mary Louise Baez <i>Cambridge University Press</i>	Barry Room
	23. Addressing Special Learning Needs in Adults	Oswaldo Grijalva <i>Socorro ISD</i>	Templeton Suite
	24. "Excellent" Language Development for Career and Educational Success	Travis Hewgley <i>McGraw-Hill ESL</i>	Elkins Room
4:00 p.m. – END OF FIRST DAY SESSIONS			

CONFERENCE SESSIONS AT A GLANCE

SATURDAY, November 22, 2008

SATURDAY, NOVEMBER 22, 2008			
7:30 – 8:00 a.m.	Registration, Continental Breakfast and Vendor Exhibits	Lobby Area	
VENDORS/PUBLISHERS			
Cambridge University Press	Heinle Cengage Learning	ALTA Book Center	McGraw-Hill ESL
McGraw-Hill Contemporary	Steck-Vaughn Publishers	Pearson Longman	Literacy Texas
TIME	SESSIONS	PRESENTER	LOCATION
8:10 – 10:00 a.m. (1 hr and 50 mins.)	25. Building the Bridge From ESL to GED: Academic Vocabulary	Theresa Sands and Diana Madrid <i>South Central Project GREAT</i>	University Suite
	26. Reading, Writing and GED Lessons Specifically Designed for Immigrant Students	Andres Muro <i>El Paso Community College</i>	Ray Room
	27. ESL and the American Dream: What's new online for Dynamic Lesson Plans	Ellen Doyal <i>South Central Project GREAT</i>	Elkins Room
	28. "Say What?" Yes, you CAN get your ESL Students to Talk!	Rosanna Loya and Michael Saenz <i>Socorro ISD</i>	Barry Room
	29. Effective Activities for Teaching Multi-Level Classes	Laurel Pollard	Wiggins Room
	30. Poster Sharing Session: Creative Classroom Management Techniques and Applications	Carol Speigl and Alex Baez <i>Texas Prof. Dev.</i>	Templeton Suite
	31. Higher Order Thinking Skills and Whole-Brain Learning Strategies	Stacey Milberger and Amelia Gilley	Smiley Room
10:10 – 12:00 p.m. (1 hr and 50 mins.)	32. Using Newspaper Ads to Teach Adults Math (This session is a repeat from Friday)	Audrey Nelson-Ricks <i>Coastal Project GREAT</i>	Barry Room
	33. Multiple Intelligences and Adult Literacy	Tracey Lofton <i>Socorro ISD</i>	Ray Room
	34. Dynamic ESL Learning Activities that Support Texas Content Standards	Carol Speigl and Alex Baez <i>Texas Prof. Dev.</i>	Templeton Suite
	35. Cycle your way through Reading in Three Easy Steps	Jacklynn Martin and Tony Falcon <i>South Central Project GREAT</i>	University Suite
	36. Metacognitive Learning Strategies for the Classroom	Stacey Milberger and Amelia Gilley	Smiley Room
	37. Teaching the Language of Family, Community, and Work: How the Texas Adult Education Content Standard and Benchmarks for ABE/ASE and ESL Learners and Formal Assessments can	Sandi Schneider <i>South Central Project GREAT</i>	Elkins Room
	38. Listen, Talk, Read, Write: Learning with Scenarios	Heide S. Wrigley <i>Literacywork International</i>	Wiggins Room
12:00 p.m. – END OF SECOND DAY SESSIONS			

CONFERENCE PRESENTATIONS

WELCOMING AND KEYNOTE SPEAKER

8:20-9:50 A.M.

A TALE OF TWO TEACHERS OR BACK FROM THE BRINK OF BURNOUT

TOMAS RIVERA
CONFERENCE CENTER

Laurel Pollard

Meet Dudley DoItRight and Clarissa Cares A lot. They became teachers because they want to help, want to be useful. They quickly discovered there is no end of need out there and that the resources they need aren't always available. Their classes are becoming more diverse, presenting new challenges. They are working harder and harder to make things right, working so hard that they sometimes lose touch with their creativity and with the enjoyment and satisfaction that teaching once brought them. Follow them as they walk the perilous paths that lead to burnout! Discover along with them the insights and strategies that guide them out of danger! Rejoice with them as they rediscover their creativity and clear thinking and achieve the life of their dreams -- the life of your dreams!

Target Audience: All Adult Educators

CONCURRENT SESSIONS

FRIDAY, NOVEMBER 21, 2008

10:00-10:50 A.M.

1. REACHING ADULT LEARNERS WITH DISTANCE EDUCATION

RAY ROOM

Marty Pitts, McGraw-Hill Contemporary

You can now reach Texas adult learners who have resisted attending traditional bricks and mortar classrooms with distance learning. Workshop attendees will experience online programs for TABE, PreGED, and GED instruction and skill practice. Each attendee will be given free, unlimited access to the online instructional programs.

Target Audience: Administrators, ABE/GED

2. APPLYING SHELTERED INSTRUCTION OBSERVATION PROTOCOL IN YOUR ESL CLASS

SMILEY ROOM

Ines Smith, Eastern New Mexico University - Roswell

Instructors will learn to apply an ESL teaching approach that incorporates several strategies. SIOP was developed to make content material comprehensible to ESL students. The model is the result of the work of Jana Echevarria, Mary Ellen Vogt and Deborah J. Short.

Target Audience: Program Coordinators, ESL

3. TEACHING TEST TAKING STRATEGIES AND VOCABULARY

WIGGINS ROOM

Diane Stern, San Jacinto Adult Learning Center

Taking the GED tests is like playing chess. There are strategies and vocabulary that must be acquired in order to play the game. This workshop will focus on integrating test taking strategies and vocabulary into the classroom on a daily basis, or in other words, teaching the test-taking game.

Target Audience: ABE/GED

CONCURRENT SESSIONS

FRIDAY, NOVEMBER 21, 2008

10:00-11:50 A.M.

4. I SHOWED UP - WHAT MORE DO YOU WANT?

ELKINS ROOM

Darlene Redclift, South Central Project GREAT

Ever wonder what it takes to motivate someone? It takes more than them just showing up. This research-based session will provide the participants with an understanding of what motivates us to do what we do and don't do. We will also examine ways to increase motivation in the classroom.

Target Audience: ABE/GED, Workforce Literacy, Family Literacy, Numeracy, Transitions

CONFERENCE PRESENTATIONS

CONCURRENT SESSIONS

FRIDAY, NOVEMBER 21, 2008

10:00-11:50 A.M.

5. STUDENT RETENTION: STRATEGIES FOR ENCOURAGING AND SUPPORTING STUDENT PERSISTENCE

TEMPLETON SUITE

Carol Speigl and Alex Baez, The Texas Professional Development Group

After engaging in a simulation of first-time adult education learners' experiences, participants will discuss student retention, its challenges and solutions. Participants will then take part in a jigsaw reading, sharing findings and selecting learner retention strategies to implement in their classrooms. A door prize will be given!

Target Audience: Administrators, all Adult Educators

6. FUNDAMENTALS OF ACTIVE TEACHING AND LEARNING

UNIVERSITY SUITE

Barbara Baird, El Paso Community College

Fun, practical, and active strategies for teaching reading, writing and oral communication will be demonstrated. Participants will experience activities and techniques first hand so they can assess their value and use in their classrooms.

Target Audience: All Adult Educators

7. TRAUMA AND LEARNING: WHAT HAVE WE LEARNED?

BARRY ROOM

Janet Isserlis, Rhode Island Adult Education Professional Development Center

Many practitioners are familiar with issues of trauma and violence that affect adults' abilities to learn. This workshop asks participants to share knowledge and experience, to (re) introduce understandings of effective ways of working with adults and to move our practice forward to support teaching and learning for all.

Target Audience: Administrators, All Adult Educators

CONCURRENT SESSIONS

FRIDAY, NOVEMBER 21, 2008

11:00-11:50 A.M.

8. WORKPLACE LITERACY - COMMUNICATING AT WORK

RAY ROOM

Rebecca Davis, South Region GREAT Center

Understanding the correct way to communicate with a supervisor and colleagues can be challenging to the second language learner. This workshop consists of the demonstration of a unit of basic communication. Participants will all receive a copy of the unit with lesson plan and PowerPoint.

Target Audience: ABE/ASE, Workforce Literacy

9. CLASSROOM DEBATES FOR ESL STUDENTS

WIGGINS ROOM

Rosanna Loya and Michael Saenz, Socorro ISD Community Education

Learn how to implement student debates in your classroom. We will show you how to get started! Come and see Socorro ISD Adult education students demonstrate an actual debate topic. This workshop will be a hands-on learning experience for you. You will be able to take this innovative and fresh approach to get your ESL students talking and expressing their opinions and knowledge. This activity can be used for all levels of ESL instruction.

Student Testimonials by: Isela Ortiz, Bernardita Marquez, Jesus Teran, Jose Garcia, and Maria Lara.

Target Audience: ESL, ABE/ASE, EL Civics

CONFERENCE PRESENTATIONS

CONCURRENT SESSIONS FRIDAY, NOVEMBER 21, 2008 1:10-3:00 P.M.

15. USING QUESTIONING STRATEGIES IN THE ADULT EDUCATION CLASSROOM TO INCREASE CRITICAL THINKING SKILLS OF STUDENTS **UNIVERSITY SUITE**

Rene Coronado, South Central Project GREAT

Increasing the critical thinking abilities in our students enhances the probability of academic success. This session addresses the tools that teachers can use in the classroom to ensure this happens. Participants will receive hands-on tools that they can implement immediately in their classroom.

Target Audience: ESL, ABE/ASE, Workplace Literacy, Family Literacy, EL Civics, Numeracy, Transitions

16. TRANSITIONING ENGLISH LANGUAGE LEARNERS FROM ESL TO ABE **RAY ROOM**

Anestine Hector-Mason, Dahlia Shaewitz and Larry Condelli, American Institutes for Research

OVAE sponsored the Transitioning English Language Learners (TELL) project to explore the state of research and practice in transitioning adult English Language Learners into ABE/GED/ASE classes. Project leaders will provide preliminary research related to student transitions, and engage audience in a discussion about instructional and programmatic practices that foster transitions.

Target Audience: ESL, ABE/ASE, Transitions

17. USING LITERATURE TO TEACH ESL **TEMPLETON SUITE**

Carol Speigl and Alex Baez, The Texas Professional Development Group

Do you use literature in your ESL classroom? Come share ideas and learn how literature can support English Language acquisition. Together we'll develop strategic learning activities from a variety of literacy genres and design winning literature-based lessons using the ESL Content Standards lesson plan.

Target Audience: ESL, Workforce Literacy, Family Literacy, EL Civics

CONCURRENT SESSIONS FRIDAY, NOVEMBER 21, 2008 2:10-4:00 P.M.

18. RAISING SCORES ON THE GED TESTS **SMILEY ROOM**

Marty Pitts, McGraw-Hill Contemporary

Through review of a GED Testing Service research reports, find out which test items GED candidates most often miss in mathematics and language arts - writing. Plenty of handouts and free textbooks at this session that was presented to great acclaim at last year's EPALL conference.

Target Audience: ABE/ASE

19. IT'S IN THE BAG! TRAVELING RESOURCE KITS **WIGGINS ROOM**

V. Kay Vaccaro, Harris County Department of Education

This interactive presentation introduces the Traveling Resource Kit used to supplement and enhance a teacher's lesson. It's all in the bag! It's a teacher's dream come true! It's a lesson in a bag! It's a wealth of materials! It's not Superman, it's a TRAVELING RESOURCE KIT!

Target Audience: All Adult Educators

CONFERENCE PRESENTATIONS

CONCURRENT SESSIONS FRIDAY, NOVEMBER 21, 2008 2:10-4:00 P.M.

20. USING NEWSPAPER ADS TO TEACH ADULTS MATH RAY ROOM

Audrey Nelson-Ricks, Coastal Project GREAT

Teachers will use newspaper ads to create math lessons and activities for situations that adult learners encounter in all aspects of their lives-grocery shopping, budgeting, shopping for clothes and household items, shopping for cars, using coupons, shopping for their children's school supplies and clothes, etc. Using actual newspaper resources instead of just problems from a text add a reality dimension to the math class and will increase student interest and motivation.

Target Audience: ABE/ASE

CONCURRENT SESSIONS FRIDAY, NOVEMBER 21, 2008 3:10-4:00 P.M.

21. WIZARDY WITH EXERCISES FOR BEGINNERS UNIVERSITY SUITE

Laurel Pollard

How can we most effectively use picture stories to teach literacy and low-beginning ESL? The author of a new text, WOW! Stories from Real Life, will demonstrate highly engaging activities that give beginners the repetition they need. The results: your students will interact more and remember more!

Target Audience: ESL

22. BALANCING GRAMMAR AND VOCABULARY FOR ESL BEGINNING STUDENTS BARRY ROOM

Mary Louise Baez, Cambridge University Press

Beginning ESL students are often daunted by extensive grammar charts and long vocabulary lists. How much grammar and vocabulary can students assimilate and integrate into their everyday conversation after one class? Research-based strategies to help students acquire language effectively and efficiently will be presented.

Target Audience: ESL, Workplace Literacy, Family Literacy, EL Civics

23. EFFECTIVE INSTRUCTION FOR STUDENTS WITH SPECIAL LEARNING NEEDS TEMPLETON SUITE

Oswaldo Grijalva, Socorro ISD Community Education

As an initiative from Texas LEARNS, adult education programs are participating in training to address the needs of adult students with Special Learning Needs. This is the avenue that our state has chosen to meet the legal federal mandate of the American with Disabilities Act (ADA). This workshop serves as an introduction to the state initiative.

Target Audience: Assessment, ESL, ABE/ASE, Workforce Literacy, Family Literacy, EL Civics

CONFERENCE PRESENTATIONS

CONCURRENT SESSIONS

FRIDAY, NOVEMBER 21, 2008

3:10-4:00 P.M.

24. "EXCELLENT" LANGUAGE DEVELOPMENT FOR CAREER AND EDUCATIONAL SUCCESS

ELKINS ROOM

Travis Hewgley, McGraw-Hill ESL

"Excellent English" equips students with the grammar and skills they need to develop a foundation for educational and career success, while accessing community resources. The presenter will demonstrate how to accelerate student language skill development by presenting grammar and delivering skill development in a familiar, picture-based approach.

Target Audience: ESL

CONCURRENT SESSIONS

SATURDAY, NOVEMBER 22, 2008

8:10-10:00 A.M.

25. BUILDING BRIDGE FROM ESL TO GED: ACADEMIC VOCABULARY

UNIVERSITY SUITE

Theresa Sands and Diana Madrid, South Central Project GREAT

Participants will understand strategies that can be used for students who are transitioning from ESL into GED classrooms. Participants will leave the workshop with resources and make and takes that can be used in classrooms immediately for the ESL student's success in the "academic" realm.

Target Audience: ESL, ABE/ASE, Transitions

26. READING, WRITING AND GED LESSONS SPECIFICALLY DESIGNED FOR IMMIGRANT STUDENTS

ELKINS ROOM

Andres Muro, El Paso Community College

Introduction to a new reading, writing, math, science and social studies textbook with lessons specifically developed for acquisition of reading, writing, math, science and social studies skills using historically, culturally and linguistically relevant lessons.

Target Audience: ESL, ABE/ASE, Family Literacy, EL Civics, Numeracy

27. ESL AND THE AMERICAN DREAM: WHAT'S NEW ONLINE FOR DYNAMIC LESSON PLANS

ELKINS ROOM

Ellen Doyal, South Central Project GREAT

This session will familiarize instructors with a wealth of new online professional development and instructional resources developed specifically for ESL instructors by the United States Citizenship and Immigration Service. Sample Lesson plans and activities will be provided.

Target Audience: ESL, Family Literacy, EL Civics

CONFERENCE PRESENTATIONS

CONCURRENT SESSIONS

SATURDAY, NOVEMBER 22, 2008

8:10-10:00 A.M.

28. “SAY WHAT?” YES, YOU CAN GET YOUR ESL STUDENTS TO TALK!

BARRY ROOM

Rosanna Loya and Michael Saenz, Socorro ISD - Community Education

Yes, it is possible to get your students to speak and use English! Join us and learn many different ideas, projects and games that maximize student learning and participation and need only a small amount of teacher preparation! Plus they integrate reading, writing and have an emphasis on speaking and can be easily implemented for all ESL levels. With these activities, your students will be applying the skills they have learned in a relevant and meaningful manner. Leave our session with activities that engage your learners. Come prepared to learn, participate and take back ideas for you to use in your next lesson.

Target Audience: ESL, EL Civics, Family Literacy

29. EFFECTIVE ACTIVITIES FOR TEACHING MULTI-LEVEL CLASSES

WIGGINS ROOM

Laurel Pollard

In a multi-level class, should we teach to the middle? Not when we have activities that individuate instruction, challenge and regard every single student. You can use these zero-preparation activities next week and for the rest of your teaching career.

Target Audience: ESL, ABE/ASE

30. POSTER SHARING SESSION: CREATIVE CLASSROOM MANAGEMENT TECHNIQUES AND APPLICATIONS

TEMPLETON SUITE

Carol Speigl and Alex Baez, The Texas Professional Development Group

We bring supplies-you bring inspiration to this dynamic poster session! After defining components of Classroom Management, we'll discuss your classroom management concerns. Following jigsaw readings to spark your ideas, you'll design original posters incorporating Classroom Management techniques into an ESL Content Standards Lesson Plan. Groups with “winning posters” win prizes!

Target Audience: ESL, Workforce Literacy, EL Civics, Family Literacy

31. HIGHER ORDER THINKING SKILLS AND WHOLE-BRAIN LEARNING STRATEGIES

SMILEY ROOM

Stacey Milberger and Amelia Gilley

In this interactive session, participants will be actively engaged in whole-brain learning movements and participate in higher-order thinking skill strategies. Research shows these activities, when immediately applied in the adult education classroom, will increase your students ability to process information so they can become independent learners both in the classroom and in everyday life.

Target Audience: ESL, ABE/ASE, Workforce Literacy, Family Literacy, EL Civics, Numeracy, Transitions

CONFERENCE PRESENTATIONS

CONCURRENT SESSIONS

SATURDAY, NOVEMBER 22, 2008

10:10-12:00 P.M.

32. USING NEWSPAPER ADS TO TEACH ADULTS MATH

BARRY ROOM

Audrey Nelson-Ricks, Coastal GREAT

Teachers will use newspaper ads to create math lessons and activities for situations that adult learners encounter in all aspects of their lives-grocery shopping, budgeting, shopping for clothes and household items, shopping for cars, using coupons, shopping for their children's school supplies and clothes, etc. Using actual newspaper resources instead of just problems from a text add a reality dimension to the math class and will increase student interest and motivation.

Target Audience: ABE/ASE

33. MULTIPLE INTELLIGENCES AND ADULT LITERACY

RAY ROOM

Tracey Lofton, Socorro ISD - Community Education

The Multiple Intelligences and Adult Literacy session teaches educators how to use a Multiple Intelligences approach to instruction, thereby transforming their classrooms into learning communities that reflect relevant and comprehensive opportunities to learn and grow mentally, socially, and academically. Eight kinds of intelligence allow eight ways to teach, rather than one (Smith, 2002). Multiple intelligences learning communities are a solution to educating students who are living and working in a world that is undergoing increased globalization.

Target Audience: ESL, ABE/ASE, Family Literacy

**34. DYNAMIC ESL LEARNING ACTIVITIES THAT SUPPORT TEXAS
CONTENT STANDARDS**

TEMPLETON SUITE

Carol Speigl and Alex Baez, The Texas Professional Development Group

What lesson will you present in next week's ESL class? Will it meet your student's learning needs? Presenters will guide participants through a three-point process for skillful and stress-free lesson planning using strategic learning activities, Texas ESL Content Standards and benchmarks, and the ESL Content Standards Lesson Plan.

Target Audience: ESL, Workforce Literacy, Family Literacy, EL Civics

35. CYCLE YOUR WAY THROUGH READING IN THREE EASY STEPS

UNIVERSITY SUITE

Jacklynn Martin and Tony Falcon, South Central Project GREAT

ABE, GED, and ESL teachers will gain strategies on how to reach main idea, vocabulary and inference following a lesson cycle and still meet the need of a multi-level classroom.

Target Audience: ABE/ASE, ESL, Workforce Literacy, Family Literacy

CONFERENCE PRESENTATIONS

CONCURRENT SESSIONS

SATURDAY, NOVEMBER 22, 2008

10:10-12:00 P.M.

36. METACOGNITIVE LEARNING STRATEGIES FOR THE CLASSROOM

SMILEY ROOM

Stacy Milberger and Amelia Gilley

The goal of this training module is to give GED/ESL adult education practitioners two specific metacognitive skill strategies that can be immediately applied in the classroom.

Target Audience: ESL, ABE/ASE, Workforce Literacy, Family Literacy, EL Civics, Numeracy, Transitions

37. TEACHING THE LANGUAGE OF FAMILY, COMMUNITY, AND WORK: HOW THE TEXAS ADULT EDUCATION CONTENT STANDARD AND BENCHMARKS FOR ABE/ASE AND THE ESL LEARNERS AND FORMAL ASSESSMENTS CAN HELP

ELKINS ROOM

Sandi Schneider, South Central Project GREAT

The training attempts to explore the relationship between the contexts of family, community, and work. The Texas Adult Education Content Standards and Benchmarks for ABE/ASE and ESL Learners (TAECBS), and formal assessments in the ESL classroom. Often teachers do not administer the BEST Plus and/or BEST Literacy and so have little awareness of how the tests are conducted and how results are interpreted. The objective of the training is to give teachers ideas as to how these formal assessments and the TAECBS both work together to better benefit students and the program as a whole. The session will not certify attendees to administer the BEST tests.

Target Audience: Assessment, ESL

38. LISTEN, TALK, READ, WRITE: LEARNING WITH SCENARIOS

WIGGINS ROOM

Heide Spruck Wrigley, Ph.D., Literacywork International

Scenarios offer an excellent way to engage students and promote language and literacy learning. This session will present illustrated situations drawn from the workplace and from every day life and are applicable to students who have high beginning/low intermediate English proficiency. Participants will receive a set of materials to use with students.

Target Audience: ESL, Workplace Literacy

CONFERENCE DIRECTORY

EXHIBITORS

ALTA BOOK CENTER

Larry Munsch
P.O. Box 316
Sweet Home, TX 77987
361.649.7371
munsch@mac.com

CAMBRIDGE UNIVERSITY PRESS

Vincent Di Blasi and Mary Louise Baez
7700 Broadway, Suite 104-126
San Antonio, TX 78209
210.826.6397
vdiblas@cambridge.org
mbaez@cambridge.org

HEINLE CENGAGE LEARNING

Tracy Springer
2701 Matin Drive, # 2046
Bedford, TX 76021
817.571.0969
tracy.springer@cengage.com

LITERACY TEXAS

Lester Meriwether
4802 Hwy. 377 St., Ste. 14
Forth Worth, TX 76166
817.696.9898
lester@literacyconnexus.org

PEARSON LONGMAN

Kendra Whittaker and Barbara McIntosh
P.O. Box 2341
Wimberley, TX 78676
480.634.7180
kendra.whittaker@pearson.com
barbara.mcintosh@pearson.com

McGRAW-HILL CONTEMPORARY

Marty Pitts
2001 Autumn Fire Dr.
Cedar Park, TX 78613
512.786.2499
marty_pitts@mcgraw-hill.com

McGRAW-HILL ESL

Travis Hewgley
506 E. 17th St.
Georgetown, TX 78626
512.240.4368
travis_hewgley@mcgraw-hill.com

STECK-VAUGHN/HARCOURT ACHIEVE

Ann Beeson
10801 N. Mopac Expwy, Bldg 3
Austin, TX 78759
512.795.3371
ann.beeson@harcourt.com

FAR WEST PROJECT GREAT STAFF

EDUARDO HONOLD

Grant Coordinator
915.937.1703
ehonol@sisd.net

MARY JO OCHOA

Grant Specialist
915.937.1706
mochoa16@sisd.net

LETY JONES

Administrative Specialist
915.937.1725
ljones01@sisd.net

www.farwestgreat.org

CONFERENCE DIRECTORY

PRESENTERS

Alex Baez
512.479.6474
alexbaez@academicplanet.com

The Texas Professional Development Group
2307 West 12th Street
Austin, TX 78703

A former ESL teacher in adult education and college/university programs, Alex has been developing and presenting professional development trainings for over 13 years, for organizations including the ESOL Project, Texas A&M University-Kingsville, the National Institute of Literacy, and the Texas Professional Development Group. Alex is a field consultant for McGraw-Hill ESL, is on the board of TextESOL III, and is currently board president of Project Learn to Read of San Antonio, an adult literacy and ESL provider.

Andres Muro
915.831.4161
amuro5@epcc.edu

El Paso Community College
1115 N. Oregon St.
El Paso, TX 79902

Andres Muro is the Manager of the Community Education program at El Paso Community College and has over 20 years of experience working in adult education, ESL and GED instruction.

Anestine Hector-Mason
202.403.6913
ahector-mason@air.org

American Institutes for Research
1000 Thomas Jefferson St.
Washington, D. C. 20007

Dr. Anestine Hector-Mason is a research scientist/analyst at the American Institutes for Research, and the director of the Transitioning English Language Learner (TELL) project sponsored by the U. S. Department of Education. Dr. Hector-Mason has background in teaching development writing and ESL, and has taught at colleges in New York City and in Texas. At the American Institutes for Research, Dr. Mason contributes to several projects, including adult ESL Literacy Impact Study and the ESL Teacher Training in Reading and Writing project.

Amelia Gilley
903.714.1641
ameliagilley@gmail.com

Independent consulting & Training
2816 Lisa Lane
Tyler, TX

Amelia Gilley has worked in the adult education field as a basic literacy, GED, and ESL Instructor. She held a supervisor position with the Literacy Council of Tyler for more than 10 years. She is a master trainer for the Bridges to Practice Learning Disabilities Training Dissemination Project, and Initiative of the National Institute for Literacy. Amelia currently works as an independent consultant and trainer remaining in the field of adult education.

Arturo Muro
915.351.2419
muroart@yahoo.com

AVANCE - El Paso Chapter
616 N. Virginia St., Ste. D
El Paso, TX 79902

Arturo has been a Family Literacy Instructor for AVANCE - El Paso Chapter for 5 years. He has grown in his ability as a professional instructor and wishes to share techniques that engage and uplift students into learning.

Audrey Nelson-Ricks
281.291.0146
a_nelson-ricks@sbcglobal.net

Coastal Project GREAT
1211 Longledge Drive
Seabrook, TX 77586

Audrey Nelson-Ricks, M.A. Curriculum and Instruction has been an educator for 30 years, serving as an administrator, teacher, and academic specialist. She has worked in Adult Education for four years. She currently teaches ESL for the College of the Mainland and consults for the Coastal Project GREAT.

Barbara Baird
915.831.5101
bbaird@elp.rr.com

El Paso Community College
2715 Silver Ave.
El Paso, TX 79930

Barbara is a professor of education at El Paso Community College. She has been actively involved in providing professional development institutes and workshops to teachers in the ESL/ABE/ASE/ field for many years. She has directed many statewide teacher training and curriculum development initiatives including Project IDEA and Project Forward.

Continued on next page...

CONFERENCE DIRECTORY

PRESENTERS

Carol Speigl
210.317.4978
cspeigl@satx.rr.com

The Texas Professional Development Group
16330 Elk Hollow
San Antonio, TX

Carol Speigl has over 20 year's experience working with ESL, GED, and literacy students. She is currently teaching multilevel ESL classes for Northeast ISD and was recently named the 2008 Adult Education Program Teacher of the Year. She is also director of Project Learn to Read of San Antonio, an adult literacy and ESL provider. Additionally, Ms. Speigl is an accomplished professional development trainer, having worked with the ESOL Project, Texas A&M University - Kingsville, the National Institute for Literacy, and the Texas Professional Development Group.

Dahlia Shaewitz
202.403.6913
dshaewitz@air.org

American Institutes for Research
1000 Thomas Jefferson St.
Washington, D.C. 20007

Ms. Dahlia Shaewitz is a Senior Research Analyst at the American Institutes for Research, and provides project management and supervision of multilayered projects. She is responsible for budget oversight, quality control, staff supervision, contractual deliverables, and timeline management for the Iowa Department of Education's Save and Drug free Schools data quality grant evaluation, National Reporting System for Adult Education (NRS), Adult Education Content Standards Warehouse, and the Office of Special Education Programs (OSEP) annual Project Directors' Conference. Ms. Shaewitz is the deputy director of the TELL project.

Darlene Redclift
210.370.5456
darlene.redclift@esc20.net

South Central Project GREAT
1314 Hines
San Antonio, TX 78208

Darlene Redclift has been an Educational Specialist in the area of Student Behavior and Discipline at Education Service Center, Region 20 for five years. Her responsibilities focused on working with students throughout the district, including a Discipline Alternative Campus and an off home campus therapeutic setting with behavioral and emotional difficulties and their families. At Region 20 she has been able to bring her knowledge of students and adult learning to help adult students.

Diana Diaz-Madrid
210.370.5407
diana.madrid@esc20.net

South Central Project GREAT
1314 Hines Ave.
San Antonio, TX 78208

Diana is currently employed with ESC-20 as an Educational Specialist in the English Language Arts Department but also work in conjunction with the Bilingual Department/Second Language Learning. She has provided staff development for teachers for the past 2 years. She also worked at the University of Texas at El Paso as an Academic Advisor where her focus was delivering student orientation courses. The student population was non-traditional with a large ESL population. Much of her presentations focused on engaging adult learners and conveying her message to ESL students. Prior to that, Diana worked at El Paso Community College and worked with students to obtain their GED.

Diane Stern
915.533.9072
dastern@episd.org

San Jacinto Adult Learning Center
1216 Olive Ave.
El Paso, TX 79901

Diane is currently employed by the El Paso Independent School District ABE programs as a GED Instructor. She recently moved to El Paso from Farmington, New Mexico where she taught ESL at Tibbetts Middle School and Adult ESL and GED for San Juan College during the summers. She has a BA in Spanish, and she is secondary school certified in Spanish, Bilingual Education and ESL.

Ellen Doyal
210.413.9530
ellen_doyal@earthlink.net

South Central Project GREAT
1314 Hines Ave.
San Antonio, TX 78208

Ellen Doyal is a South Central Project GREAT Trainer and an ESL instructor with San Antonio Independent School District and ESC Region 20.

Continued on next page...

CONFERENCE DIRECTORY

PRESENTERS

Heide Spruck Wrigley, Ph.D.
575.524.4247
heide@literacywork.com

Literacywork International
2541 Calle Tenebroso
Las Cruces, NM 88005

Heide Spruck Wrigley has been involved in all aspects of adult literacy, including family literacy, workplace literacy, adult ESL, EL civic and transition to higher education. Her work focuses on the intersection of policy, research, professional development, and classroom practice. Her staff development work around project-based learning includes a five year ongoing professional development project with teachers in Socorro, Texas. Heide has been in a number of U.S. national research studies focused on ESL literacy.

Ines Smith
575.624.7003
ines.smith@roswell.enmu.edu

Eastern New Mexico University-Roswell
52 University Blvd.
Roswell, New Mexico

Ines worked four years for ABE as an ESL Instructor and after finishing her Bachelor degree on Bilingual Education. Last December, she was given the opportunity to work under a Title V grant involving the creation and development of an ESL lab for college students at ENMU-Roswell.

Jacklynn Martin
210.370.5236
jacklyn99@sbcglobal.net

South Central Project GREAT
1314 Hines Ave.
San Antonio, TX 78208

Jacklynn is a retired teacher who has worked with adults for over thirty years. She is presently a supervisor with Region 20 at the Workforce Solutions in Pleasanton, Texas, and a presenter for South Central Project GREAT. She has finished her certification as a Special Learning Needs Resource Specialist through Texas LEARNS.

Janet Isserlis
401.863.2839
janet_issuerlis@brown.edu

**Rhode Island Adult Education Professional Development
Brown University**
P.O. Box 1974
Providence, RI 02912

Janet Isserlis works with adult literacy practitioners and learners to expand professional development opportunities, and assist in strengthening learning opportunities for adult learners. She has worked with adult immigrants and refugees in the U.S. and Vancouver, BC since 1980. In addition to classroom work, she is a co-author of Making Connections: a Literacy and EAL Curriculum from a Feminist Perspective, author of a number of articles about language/literacy learning, assessment and practitioner research and 1999-2000 Literacy Leadership fellow of the National Institute for Literacy where she undertook an exploration of the impacts of violence and trauma on adult learning.

Larry Condelli
202.403.6913
lcondelli@air.org

American Institutes for Research
1000 Thomas Jefferson St.
Washington, D.C.

Dr. Larry Condelli is a managing director of the Adult Education and Literacy Program in the Education and Human Development Division at the American Institutes for Research. His work includes research on adult ESL students, accountability, and conducting professional development and technical assistance for adult educators. He recently directed the What Works Study for Adult ESL Literacy Students, the first large-scale empirical study of the effectiveness of instructional practices for adult ESL students. He is also the project director for the National Reporting System and was instrumental in developing this national accountability system for federally funded adult education and literacy program. He is a senior advisor of the TELL project.

Laurel Pollard
520.615.4666
lpollard@dakotacom.net

Educational Consultant

Laurel Pollard is a widely known and highly respected international teacher educator. She works with teachers in a wide variety of settings, including public schools, adult education, English as a Second Language, English as a Foreign Language, literacy and teaching foreign languages in English-speaking countries.

Continued on next page...

CONFERENCE DIRECTORY

PRESENTERS

Martha “Marty” Pitts
214.957.7909
bill_walker@mcgraw-hill.com

Marty Pitts is an Account Executive with McGraw-Hill Contemporary. She is a graduate of the University of Texas at El Paso and has been a teacher and coach for 28 years. She has 11 years in experience in educational sales and has received numerous awards such as Teacher of the Year, Texas Sales Representative of the Year 3 times, and was awarded the Presidential Laurel Cup for Outstanding Sales Achievement for the U. S.

McGraw-Hill Contemporary
25 Misty Pond
Frisco, TX 75034

Mary Louise Baez
916.457.1031
mbaez@cambridge.org

Mary Louise Baez, M.A., Cambridge University Press ESL Senior Specialist has worked as an ESL/EFL instructor and teacher-trainer for the past 22 years. She believes strongly that students should be empowered to be independent learners.

Cambridge University Press
80 Primrose Way
Sacramento, CA 95819

Michael Saenz
915.937.1700
msaenz12@sisd.net

Michael Saenz has dedicated his entire teaching career to the adult ESL classroom. He joined the Socorro ISD four years ago and has taught all levels of ESL. He is currently teaching writing to all ESL levels.

Socorro ISD - Community Education
313 S. Rio Vista
El Paso, TX 79927

Oswaldo Grijalva
915.937-1713
ogrijalva@sisd.net

Currently, Oswaldo is the program coordinator for the Socorro ISD Even Start Family Literacy Program. Last year he participated in the Special Learning Needs Training Institute. Upon completion of the training as a Resource Specialist, he was selected to continue participating in this initiative to become a trainer.

Socorro ISD - Community Education
313 S. Rio Vista Rd.
El Paso, TX 79927

Patty Ramirez
915.351.2419
patty41c@yahoo.com

Patricia is finishing the end of her 2 year term as an AmeriCorps Volunteer at AVANCE El Paso. She has grown a lot and used her experience with children and combined it with the adults to achieve an interesting insight of how both can be managed.

AVANCE - El Paso Chapter/AmeriCorp
616 N. Virginia St., Ste. D
El Paso, TX 79902

Rebecca Davis
361.593.4257
rebecca.davis@tamuk.edu

Rebecca Davis, Ph.D. is an Assistant Professor of Adult Education at Texas A & M University-Kingsville. Rebecca completed her Ph. D at Texas A&M University in Educational Human Resource Development and her M.Ed. in Adult Education at Texas A&M University-Kingsville. She has over 17 years of experience in adult education. In addition to her teaching, Dr. Davis is the Director for the grant-funded South Project GREAT Center which provides professional development for literacy teachers in South Texas.

South Project GREAT
TAMUL-MSC 147
Kingsville, TX 78363

Rene Coronado
210.370.5238
rene.coronado@esc20.net

Rene Coronado has been an adult education instructor, supervisor, and an administrator for 34 years. He believes that if we want to challenge adult students to do better, we must challenge them beyond obtaining their GED or learning English. Questioning Strategies can be one of the several tools that can help students accomplish this.

South Central Project GREAT
1314 Hines
San Antonio, TX 78208

Continued on next page...

CONFERENCE DIRECTORY

PRESENTERS

Rosanna Loya
915.937.1700
rloya05@sisd.net

Socorro ISD - Community Education
313 S. Rio Vista
El Paso, TX 79927

Rosanna Loya works for the Socorro ISD where she has taught ESL classes for the past eight years. Rosanna has primarily taught advanced ESL classes, but has substantial teaching experience in the multilevel classroom. This school year she is focused on teaching, listening and speaking skills to all ESL levels.

Sandi Schneider
325.387.3818
schneider@cebridge.net

South Central Project GREAT
1314 Hines
San Antonio, TX 78208

Sandi Schneider is a trainer for South Central Project GREAT. She has 25 years of teaching experience in the field of adult ESL.

Stacey Milberger
361.648.1747
smilberger41@gmail.com

Agape Training and Development
1107 Live Oak Dr.
Inez, TX 77968

Stacey Milberger has been employed for the past 9 years as Program Coordinator for the Victoria Adult Literacy Council in Victoria, Texas. She is a ProLiteracy Master Trainer of Trainers, LitStart Trainer, Laubach Literacy Trainer, and ProLiteracy Online TOT Trainer. She is now in the process of becoming a Special Learning Needs Trainer for Texas LEARNS State learning disability project.

Theresa Sands
210.370.5407
theresa.sands@esc20.net

South Central Project GREAT
1314 Hines
San Antonio, TX 78208

Theresa has a Master's degree from University of Texas at San Antonio in Adult and Higher Education in 2005. She taught GED and ESL classes for 3 years part time for Education Service Center Region 20 before becoming a Supervisor for multiple GED and ESL sites. She is currently employed full time with ESC 20 as an Educational Specialist in the English Language Arts Department.

Tony Falcon
210.370.5236

South Central Project GREAT
1314 Hines
San Antonio, TX 78208

Tony is a retired teacher with the San Antonio Independent School District. He has a masters in adult education and has worked with adults for over fourteen years as a teacher and supervisor.

Tracey Lofton
915.937.1700
tlofto@sisd.net

Socorro ISD - Community Education
313 S. Rio Vista
El Paso, TX 79927

Currently, Ms. Lofton is a GED Instructor at the Schaeffer House. Her interest in Adult Education is how we can use Multiple Intelligences and Technological Literacy to engage and empower adult learners to achieve academic proficiency.

Travis Hewgley
512.240.4368
travis_hewgley@mcgraw-hill.com

McGraw-Hill ESL
Georgetown, TX 78626

Travis Hewgley is a Field Sales Manager at McGraw Hill ESL. Travis has over 7 years ESL teaching experience including the owner/Director of the Language School of Austin and ESL Director with Dryk Solutions.

V. Kay Vaccaro
731.692.6216
kvacarro@hcde-texas.org

Harris County Department of Education
6515 Irvington Blvd.
Houston, TX 77022

Since 1987, Kay Vaccaro, a State GREAT and CAL certified trainer, has taught ESL, ABE, and ASE in learning centers, community sites and the workplace. She is currently a Program Manager for Harris County Department of Education where she manages district sites that teach ESL and GED. In addition, she is the professional development coordinator for the 275 teachers and paraprofessional staff.

MAP OF MEETING ROOMS

University of Texas at El Paso

Union Building East

3rd Floor

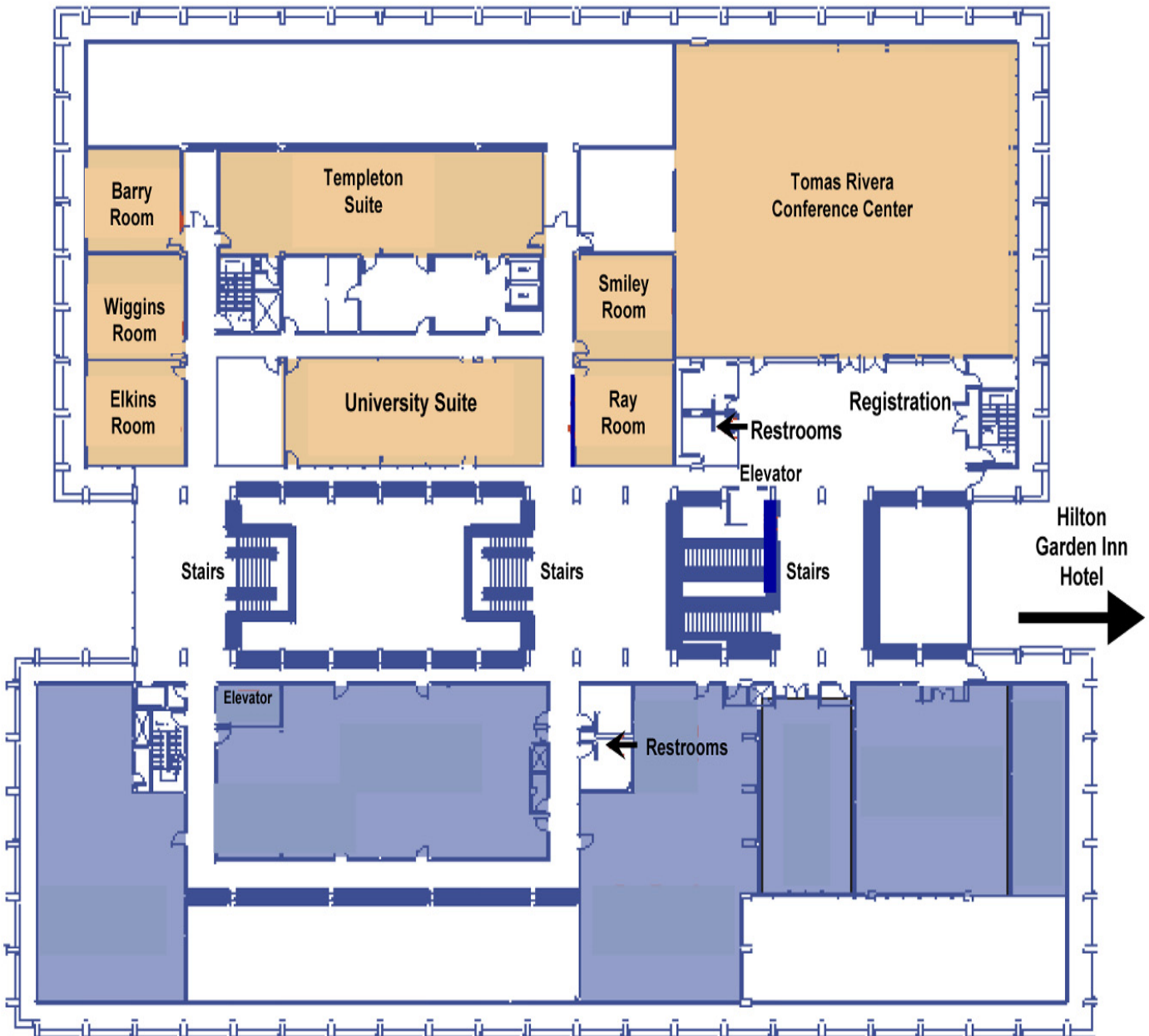


Diagram Not to Scale



Far West Project GREAT
Socorro I. S. D. - Community Services
313 S. Rio Vista Rd.
El Paso, Texas 79927

Phone: 915.937.1725

Fax: 915.937.1795

Email: farwestg@farwestgreat.org

www.farwestgreat.org