

EPALL IV CONFERENCE 2006

Encouraging Persistence and Success



4th El Paso Adult Learning and Literacy Conference

**Camino Real Hotel
El Paso, Texas
October 27 – 28, 2006**

Presented by:
Far West Project GREAT

TABLE OF CONTENTS

<i>Far West Project GREAT Advisory Council and Staff</i>	3
<i>Welcome from the Far West Project GREAT Center</i>	4
<i>Friday Sessions at a Glance</i>	5
<i>Saturday Sessions at a Glance</i>	7
<i>Conference Presentation Descriptions</i>	8
<i>Directory of Exhibitors</i>	16
<i>Directory of Presenters</i>	17
<i>Map of Meeting Rooms</i>	19

INSERTS

Overall Conference Evaluation

Conference Attendance Sheets (Friday and Saturday)



Far West Project GREAT Advisory Council

Ana Herrera	—El Paso Independent School District
Ana Macias	—University of Texas at El Paso - <i>West Project GREAT Center</i>
Andres Muro	—El Paso Community College - <i>Community Education</i>
Blanca Andrade	—El Paso Independent School District
Diana Garcia	—Texas A&M Colonias Program - <i>Even Start Program</i>
Fred Anaya	—Ysleta Community Learning Center
Janet Bono	—Upper Rio Grande Workforce Development Board
Jose Luis Silva	—Tornillo Independent School District
Jose Rayas	—Texas A & M Colonias Program
Julia Correa	—Canutillo Independent School District - <i>Even Start Program</i>
Maria Cesnik	—Ysleta Community Learning Center
Martha Serna	—Socorro Community Learning Center
Oswaldo Grijalva	—Socorro Community Learning Center
Patricia Avila	—Clint Independent School District
Pema Garcia	—Texas A&M Colonias Program
Rena Miller	—Opportunity Center for the Homeless
Sabrina Campbell	—Upper Rio Grande Workforce Development Board
Sanjay Mathur	—AVANCE - El Paso Chapter
Sheryl Jefferson	—Texas LEARNS

Far West Project GREAT Staff Members

Eduardo Honold, Grant Coordinator
Mary Jo Ochoa, Grant Specialist
Lety Jones, Administrative Specialist

Special thanks to:

*Socorro Independent School District
El Paso Independent School District
Ysleta Independent School District
Texas Center for Literacy and Learning
South Central GREAT Center*

*Texas Family Literacy
Texas LEARNS*

WELCOME!

4th Annual El Paso Adult Literacy and Learning Conference

Camino Real - El Paso

October 27-28, 2006

The Far West GREAT Center would like to extend its welcome to all participants, presenter and exhibitors to this year's conference. With 33 presentations covering topics in ESL and ABE instruction and administration, workforce training, and family literacy, EPALL provides an opportunity for all adult educators in the region to explore their areas of interest. Many presentations, including our keynote by Dr. Erik Jacobson, directly address the conference theme of encouraging persistence and success among adult students. We chose this theme because it has become increasingly clear that as adult educators we need to find better ways to encourage students to continue with their education long enough in order to reach their goals. All of the presentations, however, address the issue of improving the quality of instruction in adult education, which is, in of itself, an important factor in ensuring adult student persistence.

EPALL also offers an opportunity for adult educators to know each other a little better and to gain some new friends. We have presenters and participants from all over Texas and beyond. If you are from out of town, I hope you also have a chance to explore the border region's many culinary and cultural gifts.

Let us know how we can make your Conference experience as enjoyable as possible. Please be sure to fill out the orange Conference Evaluation before you leave.

We hope to see you again next year!

Eduardo Honold

Far West Project GREAT Coordinator



CONFERENCE SESSIONS AT A GLANCE

Friday, October 27, 2006

TIME	ACTIVITY	LOCATION
7:30 a.m.	Registration and Continental Breakfast	Mezzanine
8:20 - 8:50 a.m.	Beginning Keynote Speaker <i>Joanie Rethlake, Director of Texas LEARNS</i>	Ballroom C and D

EXHIBITORS 8:00 - 12:00

AZTEC Software	Cambridge University Press	McGraw-Hill Publishing
Pearson / Longman	Steck-Vaughn / Harcourt Achieve	Thomson / Heinle

TIME	ACTIVITY	PRESENTER	LOCATION
9:00 - 11:50 a.m. (3 hours)	1. Fun & Challenging Activities for Your ESL Classroom: A Creative Workshop	Alex Baez, Carol Speigl <i>The Texas Professional Development Group</i>	Pancho Villa
	2. Building the Foundation Strategies for Developing Mathematical Problem Solving Skills	Melanie Mayeaux, M. Ed. <i>Harris County Dept. of Educ.</i>	Kohlberg
	3. Using the HOME Inventory to Inform the Family Literacy Home Visit and Parent Education Program	Dr. Deborah Stedman, Debra Coe, Ysabel Ramirez <i>TX Family Literacy Resource</i>	Angus
9:00-10:20 a.m. (1.5 hours)	4. Making Program Changes to Increase Student Persistence - A Panel Discussion with NCSALL/TCALL Project Persist Participants	Ken Appelt <i>TCALL</i>	Rio Grande
	5. Texas' Journey to Standards-based Education: Are you Ready?	Elaine Demps <i>TCALL</i>	Board Room
	6. What's New and Really Exciting for the GED Student?	Vincent Di Blasi <i>Steck-Vaughn</i>	Longhorn
	7. Que es mi nivel? / What is my level?	Theresa Sands <i>South Central Project GREAT</i>	Uptown
	8. Research, Theory & Professional Wisdom and Their Relationship to Texas' Indicators of Program Quality for Curriculum and Instructional Practices in Adult Education and Literacy Programs	Marilyn Byrd <i>TCALL</i>	Santa Fe
10:30-11:50 a.m. (1.5 hours)	9. Strategies for Improving One-Stop Services for Workers with Limited English Proficiency	Anson Green, Federico Zaragoza, Virginia E. Price <i>Workforce Development</i>	Board Room
	10. Cien Preguntas y Mas: 100 Questions and More	Cora M. Alonzo <i>South Central Project GREAT</i>	Longhorn
	11. Writing from the Beginning	Mary Louise Baez <i>Cambridge University Press</i>	Uptown
	12. Learning to Read Can be a Laughing Matter! Teaching Reading through Political Cartoons	Theresa Sands <i>South Central Project GREAT</i>	Santa Fe
	13. How Effective is Your TEAMS?	Janell Baker <i>Harris County Department of Education</i>	Rio Grande

CONFERENCE SESSIONS AT A GLANCE*Friday, October 27, 2006 (Continued)*

TIME	ACTIVITY	PRESENTER	LOCATION
12:00 - 1:15 p.m.	14. EPALL Luncheon <i>Keynote: The Challenge of Learner Persistence</i>	Dr. Erik Jacobson <i>Montclair State University</i>	Ballroom C & D
1:30-3:50 p.m. (2.5 hours)	15. Teaching Multi-level, Multi-functional Students through Centers	Christine Nevarez, Sylvia Cervantez, Janie Delgado <i>Wharton County Junior College</i>	Pancho Villa
	16. Vamos a Charlar/Let's Talk: Oral Conversational Skills for ESL	Norma Lopez <i>South Central Project GREAT</i>	Kohlberg
	17. Calling All Family Literacy Educators: Learning Games for Babies, Toddlers, Young Children and their Parents	Dr. Deborah Stedman, Debra Coe <i>Texas Family Literacy Resource</i>	Angus
	18. Motivation and Retention Strategies	Guadalupe Ruvalcaba <i>South Central Project GREAT</i>	Longhorn
	19. Make Math Fun and Painless! Hands on Strategies for Adults with Learning Difficulties	Theresa Sands, Jacklynn Martin <i>South Central Project GREAT</i>	Rio Grande
	20. Delivering Workforce-Related ESL: Six Easy Steps to Program Success	Barbara Tondre-El Zorkani <i>Texas LEARNS</i>	Santa Fe
	21. Weaving the Tapestry: Promoting Seamless Transitions for our Advanced ESL Learners	Carol Speigl, Alex Baez <i>Texas Professional Development Group</i>	Uptown
	22. Multi-disciplinary Approaches to Self Assessment with Adult Learners	Dr. Betsy Quintero <i>New York University</i>	Board Room
4:00 p.m. - END OF FIRST DAY SESSIONS			

CONFERENCE SESSIONS AT A GLANCE

SATURDAY, October 28, 2006

TIME	ACTIVITY	LOCATION	
7:30 a.m.	Registration and Continental Breakfast	Mezzanine	
EXHIBITORS 8:00 - 12:00			
AZTEC Software	Cambridge University Press	Pearson / Longman	
Steck-Vaughn / Harcourt Achieve		Thomson / Heinle	
TIME	ACTIVITY	PRESENTER	LOCATION
8:30-11:30 a.m. <i>(3 hours)</i>	23. ESL Instructors, Start Your Engines, But don't Leave the Pit Without Your Resources!	Barbara Tondre-El Zorkani <i>Texas LEARNS</i>	Pancho Villa
	24. Motivating Parents to Help their Children Succeed in School and Life	Guadalupe Ortiz <i>Even Start Family Literacy</i>	Uptown
	25. Demystifying Advanced Math: Getting your ABE Students to Use Higher Order Thinking Skills	John Hodges <i>Del Mar College/Harris County</i>	Rio Grande
	26. Using Authentic Materials in the Adult Literacy Classroom	Dr. Erik Jacobson <i>Montclair State University</i>	Kohlberg
	27. Integrating Practice in the Four ESL Skills	Dr. Ellen H. Courtney <i>UT of El Paso</i>	Board Room
8:30-9:50 a.m. <i>(1.5 hours)</i>	28. Culture Shock and How it Affects the Classroom	Liz Moya <i>Ysleta Community Learning Center</i>	Longhorn
	29. Developing Visual Literacy in the Classroom	Rosa Hidalgo, Rosanna Loya, Mike Saenz <i>Socorro Community Learning Center</i>	Angus
	30. ESL/LEP Learners in Transition to Basic Skills, An AZTEC Software Solution for GED and Job Preparation	Bill Pounds <i>AZTEC Software</i>	Santa Fe
10:00-11:30 a.m. <i>(1.5 hours)</i>	31. Preparing Students to Make a PowerPoint® ESL Showcase	Arturo Muro, Carol Martinez <i>AVANCE- Even Start Program</i>	Angus
	32. FLASH! FLASH! FLASH! Flashcards can be Fun!	Sally Brandenberger, Yvonne Porras, Irasema Zaragosa <i>Ysleta Community Learning Ctr.</i>	Longhorn
	33. Using Emotional Intelligence in the Adult Education Classroom	Dr. Rebecca Davis <i>South Region Project GREAT</i>	Santa Fe
11:30 a.m. - END OF SECOND DAY SESSIONS			

CONFERENCE PRESENTATIONS**CONCURRENT SESSIONS****FRIDAY, OCTOBER 27, 2006****9:00-11:50 A.M.****1. FUN & CHALLENGING ACTIVITIES FOR YOUR ESL CLASSROOM:
A CREATIVE WORKSHOP****PANCHO VILLA ROOM***Alex Baez and Carol Speigl, The Texas Professional Development Group*

Join our creative challenge: create you own ESL classroom activities! After a review of second language acquisition theory and the principles of teaching adults, and a look at the needs of our ESL students, participants will explore sample lesson plans for ESL classes. Participants will then explore a variety of interesting, fun and instructional strategies/learning activities targeted to the learning objectives of the lesson plans. Participants will create their own original learning activities to plug into lesson plans and share their original learning activities with the whole group. A drawing for an ESL activity book will wrap up the workshop.

Target Audience: ESL, Numeracy, Workforce, Community Colleges, Vocational Programs

**2. BUILDING THE FOUNDATION STRATEGIES FOR DEVELOPING
MATHEMATICAL PROBLEM SOLVING SKILLS****KOHLBERG ROOM***Melanie A. Mayeaux, M. Ed., Harris County Department of Education*

In this interactive, practical and some what radical workshop, participants will explore strategies to help students develop the fundamental understanding of mathematical concepts and relationships needed to develop reasoning and problem-solving skills. Participants will explore ways to present math as a “guided discovery” that allows students to build on their existing math abilities and to “see” mathematical concepts before applying them. This non-traditional approach looks at math instructions as a “web” of integrated and related skills rather than a linear sequencing of decontextualized procedures and strategies.

Target Audience: Numeracy, GED, ABE

**3. USING THE HOME INVENTORY TO INFORM THE FAMILY
LITERACY HOME VISIT AND PARENT EDUCATION PROGRAM****ANGUS ROOM***Dr. Deborah Stedman, Debra Coe & Ysabel Ramirez, Texas Family Literacy Resource Center*

The HOME Inventory is useful as a needs assessment tool for family literacy home visits and parenting. Come work with the Texas Family Literacy Resource Center to learn how to put this required assessment to work for your home visits and parent education programs.

Target Audience: Administrators and Directors, All Adult Educators, Workforce

CONCURRENT SESSIONS**FRIDAY, OCTOBER 27, 2006****9:00-10:20 A.M.****4. MAKING PROGRAM CHANGES TO INCREASE STUDENT
PERSISTENCE--A PANEL DISCUSSION WITH NCSALL/TCALL
PROJECT PERSIST PARTICIPANTS****RIO GRANDE ROOM***Ken Appelt, Texas Center for the Advancement of Literacy and Learning*

In this session a panel of three participants in the NCSALL/TCALL Project Persist (Janell Baker, Martin Riojas and Christine Nevarez) will be presented. The panelists will share their experiences as participant action researchers attempting to increase student persistence within their programs. The moderator will begin with a brief overview of Project Persist and time will be reserved for questions from the audience.

Target Audience: Administrators and Directors, All Adult Educators

CONFERENCE PRESENTATIONS**CONCURRENT SESSIONS****FRIDAY, OCTOBER 27, 2006****9:00-10:20 A.M.****5. TEXAS' JOURNEY TO STANDARDS-BASED EDUCATION: ARE YOU READY?****BOARD ROOM***Elaine Demps, Texas Center for the Advancement of Literacy and Learning*

The journey to standards-based education in Texas began in 2000. Along the way, the effort was named Texas Adult Education Standards Project (TAESP), five EFF standards were adopted, writing teams were formed, and benchmarks were developed. The project is currently in Phase IV, during which the benchmarks developed by the writing team members are undergoing a statewide field test. The purpose of this panel presentation is to share with you the experiences of the teachers who are field-testing the benchmarks for TAESP. As Texas gets closer to implementing ESL, ABE, and ASE standards and benchmarks across the state, come and learn how teaching with standards can help improve the performances of your students.

Target Audience: Administrators and Directors, All Adult Educators, Workforce**6. WHAT'S NEW AND REALLY EXCITING FOR THE GED STUDENT?****LONGHORN ROOM***Vincent Di Blasi, Steck-Vaughn*

There are new official GED practice tests out, new ways to use technology and new technology itself available for the GED student and teacher. Come join us in this session to learn about the new tools and materials now available through Steck-Vaughn. Details about the materials will be provided and discussed.

Target Audience: Administrators and Directors, GED**7. QUE ES MI NIVEL? / WHAT IS MY LEVEL?****UPTOWN ROOM***Theresa Sands, South Central Project GREAT*

This session will incorporate the new NRS ESL functioning levels through mini lessons, samples of each level and various activities. Participants will leave with an understanding of the levels and activities that can be utilized in your classroom to help students progress from level to level.

Target Audience: ESL**8. RESEARCH, THEORY & PROFESSIONAL WISDOM AND THEIR RELATIONSHIP TO TEXAS' INDICATORS OF PROGRAM QUALITY FOR CURRICULUM AND INSTRUCTIONAL PRACTICES IN ADULT EDUCATION AND LITERACY PROGRAMS****SANTA FE ROOM***Marilyn Byrd, Texas Center for the Advancement of Literacy and Learning*

This presentation will give an overview of a project completed by TCALL aimed at identifying instructional practices and materials that adhere to the objectives of Texas' Indicators of Program Quality (IPQs). Adult Education programs are now required to use instructional practices and materials based on a foundation of research. For this reason, the reference document developed through this project should provide a useful tool for decision makers and educators in complying with the area curriculum and instruction.

Target Audience: Administrators and Directors, All Adult Educators

CONFERENCE PRESENTATIONS**CONCURRENT SESSIONS****FRIDAY, OCTOBER 27, 2006****10:30-11:50 A.M.****9. STRATEGIES FOR IMPROVING ONE-STOP SERVICES FOR WORKERS WITH LIMITED ENGLISH PROFICIENCY****BOARD ROOM***Anson Green, Virginia E. Price, Federico Zaragoza, Workforce Development*

A panel will discuss a research and project development project funded by the Texas Workforce Commission to create technical assistance guides that will address the unique reemployment needs of dislocated workers with limited English proficiency. Still under development, the guides will cover four areas: Effective intake and counseling practices; encouraging female dislocated workers to consider employment in non-traditional occupations; criteria for evaluating bilingual vocational skills courses; and an evaluation instrument to select appropriate assessment tools for dislocated workers with limited English proficiency.

Target Audience: Administrators and Directors, Workforce, Vocational Programs**10. CIEN PREGUNTAS Y MAS: 100 QUESTIONS AND MORE****LONGHORN ROOM***Cora M. Alonzo, South Central Project GREAT*

Come and join us in this session where we will discuss the "Learn about the United States - Quick Civics Lesson Guide." The guide will be presented to assist the participants in developing strategies to help their students obtain United States Citizenship.

Target Audience: ESL**11. WRITING FROM THE BEGINNING****UPTOWN ROOM***Mary Louise Baez, Cambridge University Press*

Adult learners are sometimes intimidated when asked to write in a second language. Throughout this session, participants will discuss challenges student writers encounter at the beginning level and discover techniques to build student confidence. Examples of how listening, speaking and reading input prepare students to write what they already know will also be demonstrated.

Target Audience: ESL, Community College, Vocational programs**12. LEARNING TO READ CAN BE A LAUGHING MATTER! TEACHING READING THROUGH POLITICAL CARTOONS****SANTA FE ROOM***Theresa Sands, South Central Project GREAT*

Come have a laugh while learning some new and different reading strategies. This fun and interactive session will incorporate a variety of ways to teach your students punctuation, sequencing, details, author's purpose and comprehension.

Target Audience: GED, ABE, All Adult Educators**13. HOW EFFECTIVE IS YOUR TEAMS?****RIO GRANDE ROOM***Janell Baker, Harris County Department of Education*

This session will focus on using TEAMS reports and information to monitor and track program, site, and teacher performance. It will also include time for questions and comments related to the presentation materials.

Target Audience: Administrators and Directors

CONFERENCE PRESENTATIONS**EPALL LUNCHEON****12:00-1:15 P.M.****14. THE CHALLENGE OF LEARNER PERSISTENCE****BALLROOM C & D***Dr. Erik Jacobson, Montclair State University*

Programs across the county have long struggled with student retention. Recent research on the topic suggests that programs should also be thinking about learner persistence, the ability of students to pursue their education over a period of time. The speaker will highlight the differences between these two concepts, and focus on how the state of California has addressed student retention and persistence. Specific program and classroom-level strategies will be presented.

CONCURRENT SESSIONS**FRIDAY, OCTOBER 27, 2006****1:30-3:50 P.M.****15. TEACHING MULTI-LEVEL, MULTI-FUNCTIONAL STUDENTS THROUGH CENTERS****PANCHO VILLA ROOM***Christine Nevarez, Sylvia Cervantez, Janie Delgado, Wharton County Junior College*

Adult Education provides a unique environment where teaching students at numerous levels is often required. Come learn how to teach ABE/GED/ESL multi-level, multi-functional students all five subject areas within one class session. This session will provide samples of methodology and tools that have been proven to build student retention and progress.

Target Audience: All Adult Educators, Vocational Programs**16. VAMOS A CHARLAR / LET'S TALK: ORAL CONVERSATIONAL SKILLS FOR ESL****KOHLBERG ROOM***Norma Lopez, South Central Project GREAT*

This interactive session will focus on encouraging ESL students to develop oral conversational skills by using fun classroom activities. Sample lessons and activities will be presented and shared with participants. Come prepared to see and share new ideas to help develop our students conversational skills.

Target Audience: ESL**17. CALLING ALL FAMILY LITERACY EDUCATORS: LEARNING GAMES FOR BABIES, TODDLERS, YOUNG CHILDREN AND THEIR PARENTS****ANGUS ROOM***Dr. Deborah Stedman and Debra Coe, Texas Family Literacy Resource Center*

Come with your family literacy team and learn about research - based activities to enhance child development that you can use every day. Adult educators, parent educators, coordinators, early childhood educators, home-visitors - this is for you! This session is a follow-up to the Birth Through Two and a preview of TFLRC spring Home Visiting professional development. So be sure to join us!

Target Audience: Administrators and Directors, All Adult Educators

CONFERENCE PRESENTATIONS**CONCURRENT SESSIONS****FRIDAY, OCTOBER 27, 2006****1:30-3:50 P.M.****18. MOTIVATION AND RETENTION STRATEGIES****LONGHORN ROOM***Guadalupe Ruvalcaba, South Central Project GREAT*

This workshop will assist instructors in increasing their student retention rates by focusing on effective communication skills in the adult education classroom. These communication skills will help instructors set goals, motivate students, prepare effective lesson plans, and meet student needs.

Target Audience: Administrators and Directors, GED, ESL, ABE

19. MAKE MATH FUN AND PAINLESS! HANDS-ON STRATEGIES FOR ADULTS WITH LEARNING DIFFICULTIES**RIO GRANDE ROOM***Theresa Sands and Jacklynn Martin, South Central Project GREAT*

Experience a wide range of hands-on strategies to help your students become successful in math. Characteristics of learning disabled adults will be identified while introducing new teaching tools for educators. This training will allow participants to engage in auditory, visual and kinesthetic approaches to math that can be easily used in the classroom.

Target Audience: GED, ABE, All Adult Educators, Community Colleges

20. DELIVERING WORKFORCE-RELATED ESL: SIX EASY STEPS TO PROGRAM SUCCESS**SANTA FE ROOM***Barbara Tondre-El Zorkani, Texas LEARNS*

Intended for program administrators, this session focuses on a six-step process to planning and delivering successful work-related ESL initiatives. Participants will inventory their own strengths and needs, and work through samples of modular training materials available to them and their instructional staff.

Target Audience: Administrators and Directors, ESL, Workforce

21. WEAVING THE TAPESTRY: PROMOTING SEAMLESS TRANSITIONS FOR OUR ADVANCED ESL LEARNERS**UPTOWN ROOM***Carol Speigl and Alex Baez, The Texas Professional Development Group*

This interactive workshop provides a forum for both ESL and English language GED instructors to compare and share their teaching methodologies, strategies, and materials, as well as to participate in a discussion on how to best meet their learners needs to enhance academic success. Participants will discuss ways in which they can remove common barriers transitioning students often experience. ESL and GED teachers will collaborate to develop strategies to help their students improve success rates in areas such as reading, writing, reasoning and math, culture, and study and test-taking skills. Presenters will share sample lesson plans targeted to the language and academic needs of these transitioning learners, and participants will share practices and ideas on how they can best accommodate the needs of their ESL/GED students.

Target Audience: GED, ESL, Numeracy, Workforce, Community Colleges, Vocational Programs

CONFERENCE PRESENTATIONS**CONCURRENT SESSIONS****FRIDAY, OCTOBER 27, 2006****1:30-3:50 P.M.****22. MULTI-DISCIPLINARY APPROACHES TO SELF-ASSESSMENT WITH ADULT LEARNERS****BOARD ROOM***Dr. Elizabeth Quintero, New York University*

Self-assessment helps learners become aware of, articulate, and use their learning. This session will present a Self-Assessment Model for all four aspects of Family Literacy Programs (Adult Education, Parent Education, Age Appropriate Child Education, and Intergenerational Activities). Examples will be shared. Then, sample objectives from different content classes (ABE, ESOL, Family Literacy, Work Place Literacy, etc.) will be distributed and participants will join small groups to create self-assessment tools for their current work.

Target Audience: All Adult Educators, Community Colleges, Vocational Programs

CONCURRENT SESSIONS**SATURDAY, OCTOBER 28, 2006****8:30-11:30 A.M.****23. ESL INSTRUCTORS, START YOUR ENGINES, BUT DON'T LEAVE THE PIT WITHOUT YOUR RESOURCES!****PANCHO VILLA ROOM***Barbara Tondre-El Zorkani, Texas LEARNS*

At this session, ESL Instructors will be encouraged to inventory their own readiness to deliver successful workforce-related English language instruction. Participants will also learn about industry skills standards' impact on instruction and participate in lesson plan development activities. Interested participants will be given the opportunity to join the Workplace Instructors Cadre.

Target Audience: ESL, Workforce, Vocational Programs

24. MOTIVATING PARENTS TO HELP THEIR CHILDREN SUCCEED IN SCHOOL AND LIFE**UPTOWN ROOM***Guadalupe Ortiz, Socorro ISD - Even Start Program*

Participants will learn how parents can effectively motivate children to succeed in school. The workshop will address topics such as helping children establish goals, developing a positive attitude, and channeling their enthusiasm to create a lifelong motivation to succeed in life.

Target Audience: All Adult Educators

25. DEMYSTIFYING ADVANCED MATH: GETTING YOUR ABE STUDENTS TO USE HIGHER ORDER THINKING SKILLS**RIO GRANDE ROOM***John Hodges, Del Mar College*

This interactive and practical workshop presents an approach to teaching work problems and higher order thinking skills that may be new, if not, radical. Participants will learn terminology, synthesis and various strategies to introduce advanced math to their students by building on student's knowledge and skills. Participants will learn and develop new ways to "think outside the box" while focusing on problem-solving, reasoning, and understanding rather than memorization or computational skills. Workshop can be targeted for all teachers, by is especially useful for ABE and ASE.

Target Audience: Numeracy, GED, ABE, ESL, All Adult Educators

CONFERENCE PRESENTATIONS**CONCURRENT SESSIONS****SATURDAY, OCTOBER 28, 2006****8:30-11:30 A.M.****26. USING AUTHENTIC MATERIALS FOR ESL INSTRUCTION****KOHLBERG ROOM***Dr. Erik Jacobson, Montclair State University*

This workshop will focus on the use of authentic materials in the adult literacy classroom. The presenter will begin by defining “authentic materials” and by reviewing a NCSALL research study that found that authentic materials had a positive impact on students’ literacy practices outside of school. The second part of the workshop will focus on discussing issues involved in using authentic materials. The third and final part of the workshop will be dedicated to building lesson plans based on authentic materials. Participants will have time to share resources and ideas.

Target Audience: ESL**27. INTEGRATING PRACTICE IN THE FOUR ESL SKILLS****BOARD ROOM***Dr. Ellen Courtney, UT of El Paso - Department of Languages and Linguistics*

One challenge that language teachers face is developing lessons with activities that provide practice in all four skill areas: listening, speaking, reading and writing. A further challenge is making this type of lesson cohesive: are the activities related in such a way that the lesson “flows”? In this workshop, sample lessons for learners at different levels of proficiency will be presented. The participants will engage in discussion of the lesson activities, and in groups, they will work on ways to adapt the lesson activities to their own groups of learners.

Target Audience: ESL**CONCURRENT SESSIONS****SATURDAY, OCTOBER 28, 2006****8:30-9:50 A.M.****28. CULTURE SHOCK AND HOW IT AFFECTS THE CLASSROOM****LONGHORN ROOM***Liz Moya, Ysleta Community Learning Center*

Moving to a new school or home requires some getting used to. But having to move to another country, adopting its culture and adapting to it takes its toll. Come learn about culture shock, how to identify it among students. In this session methods and tools will be shared to help your students overcome this shock.

Target Audience: All Adult Educators, Community Colleges, Vocational Programs**29. DEVELOPING VISUAL LITERACY IN THE CLASSROOM****ANGUS ROOM***Rosa Hidalgo, Rosanna Loya, and Mike Saenz, Socorro Community Learning Center*

Do you need instructional ideas for your ESL classroom? This presentation will feature research-based instructional projects, classroom strategies and ideas that develop visual literacy and language learning in the ESL classroom. These fun and effective strategies can be easily implemented and modified for all instructional levels.

Target Audience: All Adult Educators, Community Colleges

CONFERENCE PRESENTATIONS**CONCURRENT SESSIONS****SATURDAY, OCTOBER 28, 2006****8:30-9:50 A.M.****30. ESL/LEP LEARNERS IN TRANSITION TO BASIC SKILLS, AN AZTEC SOFTWARE SOLUTION FOR GED AND JOB PREPARATION****SANTA FE ROOM***Bill Pounds, Aztec Software*

This user-friendly software contains Spanish and English audio, one transition tool found in Aztec Software. Research has demonstrated that the results using this software for ESL/LEP learners are outstanding. This session will discuss software components and will include a demonstration of academic, work readiness, life and employability skills for GED and job readiness preparation .

Target Audience: All Adult Educators, Community Colleges, Vocational Programs, Administrators and Directors

CONCURRENT SESSIONS**SATURDAY, OCTOBER 28, 2006****10:00-11:30 A.M.****31. PREPARING STUDENTS TO MAKE A POWERPOINT ® ESL SHOWCASE****ANGUS ROOM***Arturo Muro and Carol Martinez, AVANCE - Even Start Program*

During this session some live student presentations will be shown, discussed and analyzed. Additionally, presenters will discuss their teaching methods for previous showcases and share samples of lesson plans that have succeeded with ESL classes. The session will allow for a question and answer period with a panel of students and instructors.

Target Audience: All Adult Educators

32. FLASH! FLASH! FLASH! FLASHCARDS CAN BE FUN!**LONGHORN ROOM***Sally Brandenberger, Yvonne Porras, and Irasema Zaragosa, Ysleta Community Learning Center*

Something old yet something new. How about trying flashcards with your students? This session will discuss the many uses of flashcards for different ESL levels and how to use them while teaching vocabulary, grammar, numeracy, citizenship and civics programs. Come flash with us!

Target Audience: All Adult Educators

33. USING EMOTIONAL INTELLIGENCE IN THE ADULT EDUCATION CLASSROOM**SANTA FE ROOM***Dr. Rebecca Davis, South Region Project GREAT*

This session will include discussion on how to: 1) value yourself and behave responsibly as a person of worth and dignity, 2) establish and maintain a variety of effective, strong and healthy relationships, 3) get along and work well with others, and 4) deal effectively with the demands and pressures of daily life and work. Attending this session will give you the tools to help your students increase their emotional intelligence and succeed in the adult education classroom.

Target Audience: All Adult Educators

CONFERENCE DIRECTORY

EXHIBITORS

AZTEC SOFTWARE

51 Commerce Street
Springfield, NJ 07081
(973)258-0011
bpounds@aztecsoftware.com

CAMBRIDGE UNIVERSITY PRESS

32 Avenue of the Americas
New York, NY 10013
(800)899-5222
ggovia@cambridge.org, mbaez@cambridge.org

PEARSON LONGMAN

10 Bank Street, Ste. 900
White Plains, NY 10606
(914)287-8059
barbara.mcintosh@pearsoned.com
andrea.adams@pearsoned.com

STECK-VAUGHN/HARCOURT ACHIEVE

P.O. Box 91138
San Antonio, TX 78209
(210)826-6397
vincent.dibiasi@harcourt.com

THOMSON/HEINLE

25 Thomson Place
Boston, MA 02210
866-828-0366
tony.field@thomson.com

MC GRAW - HILL PUBLISHING

(432) 699-4498
bbarnes.7@cox.net

FAR WEST GREAT STAFF

EDUARDO HONOLD

Grant Coordinator
(915)937-1703
ehonol@sisd.net

MARY JO OCHOA

Grant Specialist
(915)937-1706
mochoa16@sisd.net

LETY JONES

Administrative Specialist
(915)937-1725
ljones01@sisd.net

www.farwestgreat.org

CONFERENCE DIRECTORY**PRESENTERS**

Cora M. Alonzo
ESC-20 South Central Project GREAT
1314 Hines Ave.
San Antonio, TX 78208
(210)533-3963
coraalonzo@sbcglobal.net

Ken Appelt
TCALL
Texas A & M University, 4477 TAMU
College Station, TX 77843
(800)441-7323
kappelt@coe.tamu.edu

Alex Baez
Texas Professional Development Group
2307 West 12th Street
Austin, TX 78703
(512)479-6474
alexbaez@academicplanet.com

Mary Louise Baez
Cambridge University Press
32 Avenue of the Americas
New York, NY 10013
(800)899-5222
mbaez@cambridge.com

Janell Baker
Harris County Department of Education
6515 Irvington Blvd.
Houston, TX 77022
(713)692-6212
jbaker@hcde-texas.org

Sally Brandenberger
Ysleta Community Learning Center
121 Padres
El Paso, TX 79907
(915)434-9400
sbrandenberger@yisd.net

Marilyn Byrd
TCALL
Texas A & M University, 4477 TAMU
College Station, TX 77843
(979)845-6615
maribyrd@tamu.edu

Sylvia Cervantez
Wharton County Junior College
911 E. Boling Hwy
Wharton, TX 77488
(979)532-6552
sylviac@wcjc.edu

Debra Coe
Texas Family Literacy Resource Center
601 University Dr.
San Marcos, TX 78666
(512)245-9600

Dr. Ellen H. Courtney
UT of El Paso, Department of Language
and Linguistics
3044 Taylor Ave.
El Paso, TX 79930
(915)566-1053
ehcourtney@utep.edu

Dr. Rebecca Davis
South Region GREAT Center
Texas A & M University
Kingsville MSC 147
Kingsville, TX 78263
(361)593-4257
rebecca.davis@tamuk.edu

Janie Delgado
Wharton County Junior College
911 E. Boling Hwy
Wharton, TX 77488
(979)532-6552
janied@wcjc.edu

Elaine Demps
TCALL
Texas A & M University, 4226 TAMU
College Station, TX 77843
(979)458-1604
demps@tamu.edu

Vincent Di Blasi
Steck-Vaughn/Harcourt Achieve
P.O. Box 91138
San Antonio, TX 78209
(210)826-6397
vincent.dibiasi@harcourt.com

Anson Green
Texas Workforce Commission
101 E. 15th Street, Rm. 212-T
Austin, TX 78778
(512)936-0642
anson.green@twc.state.tx.us

Rosa Hidalgo
Socorro Community Learning Center
313 S. Rio Vista
El Paso, TX 79906
(915)937-1795
rhidal@sisd.net

John Hodges
Del Mar College
2229 Ivy Dr.
Corpus Cristi, TX 78418
(361)947-0179
jhodges@delmar.edu

Erik Jacobson
Montclair State University
126 Chestnut Street #2
Montclair, NJ 07042
(973)337-6201
erikjacobson@comcast.net

Tiffany Johnson
Victoria College
4236 CR 400
Yoakum, TX 77995
(361)293-5199
tiffany.johnson@victoriacollege.edu

Norma Lopez
ESC-20 South Central Project GREAT
1314 Hines Ave.
San Antonio, TX 78208
(210)370-5754
normalopez@satx.rr.com

Rosanne Loya
Socorro Community Learning Center
313 S. Rio Vista Rd.
El Paso, TX 79927
(915)937-1795
rloya05@sisd.net

Continued on next page...

CONFERENCE DIRECTORY**PRESENTERS**

Jacklynn Martin
ESC-20 South Central Project GREAT
1314 Hines Ave.
San Antonio, TX 78208
(210)649-4519

Carol Martinez
AVANCE-El Paso
720 Arizona
El Paso, TX 79902
(915)351-2419
carol_marti@msn.com

Melanie Mayeaux
Harris County Department of Education
5615 Morningside, #124
Houston, TX 77005
(713)524-8776
mmayeaux@hotmail.com

Liz Moya
Ysleta Community Learning Center
121 Padres
El Paso, TX 79907
(915)434-9400
lizmoya@yahoo.com

Arturo Muro
AVANCE-El Paso
720 Arizona
El Paso, TX 79902
(915)351-2419
muroart@yahoo.com

Christine Nevarez
Wharton County Junior College
911 E. Boling Hwy
Wharton, TX 77488
(979)532-6552
christinen@wcjc.cc.tx.us

Guadalupe Ortiz
Socorro Community Learning Center -
Even Start Program
313 S. Rio Vista Rd.
El Paso, TX 79927
(915)937-1712
gortiz01@sisd.net

Yvonne Porras
Ysleta Community Learning Center
121 Padres
El Paso, TX 79907
(915)434-9400
gloriayvonneporras@yahoo.com

Bill Pounds
Aztec Software
51 Commerce Street
Springfield, NJ 07081
(973)258-0011
bpounds@aztecsoftware.com

Virginia E. Price
Genesis 21
616 N. Virginia, Ste.D
El Paso, TX 79902
(915)532-0521
virginia@genesis21.com

Dr. Elizabeth Quintero
New York University
Steinhardt School of Education
239 Green St., #635
New York, NY 10003
(917)579-8551
epq1@nyu.edu

Ysabel Ramirez
Texas Family Literacy Resource Center
601 University Dr.
San Marcos, TX 78666
(512)245-9692
yr01@txstate.edu

Joanie Rethlake
Texas LEARNs
6311 Irvington Blvd.
Houston, TX 77022
(713)696-0729
jrethlake@hcde-texas.org

Guadalupe Ruvalcaba
ESC-20 South Central Project GREAT
1314 Hines Ave.
San Antonio, TX 78208
(210)370-5284
gruvalcaba@saisd.net

Mike Saenz
Socorro Community Learning Center
313 S. Rio Vista Rd.
El Paso, TX 79927
(915)937-1795
msaenz12@sisd.net

Theresa Sands
ESC-20 South Central Project GREAT
1314 Hines Ave.
San Antonio, TX 78208
(210)218-6170
rcsnoll79@aol.com

Carol Speigl
Texas Professional Development Group
16330 Elk Hollow
San Antonio, TX 78247
(210)317-4978
cleespeigl@att.net

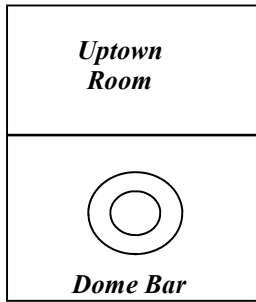
Deborah Stedman
Texas Family Literacy Resource Center
601 University Dr.
San Marcos, TX 78666
(512)245-9600
stedman01@austin.rr.com

Barbara Tondre-El Zorkani
Texas LEARNs
2141 Surrender Ave.
Austin, TX 78728
(512)251-0046
btondre@earthlink.net

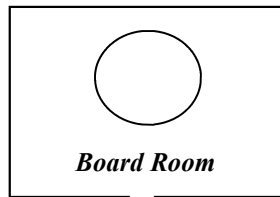
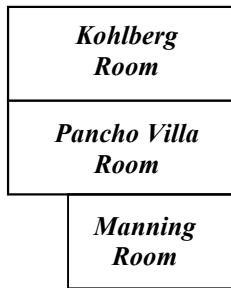
Irasema Zaragoza
Ysleta Community Learning Center
121 Padres
El Paso, TX 79907
(915)434-9400
irasema1962@yahoo.com

Federico Zaragoza
Alamo Community College District
201 W. Sheridan
San Antonio, TX 78204
(210)208-8000

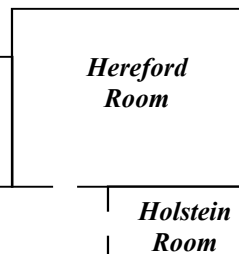
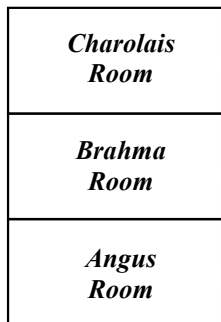
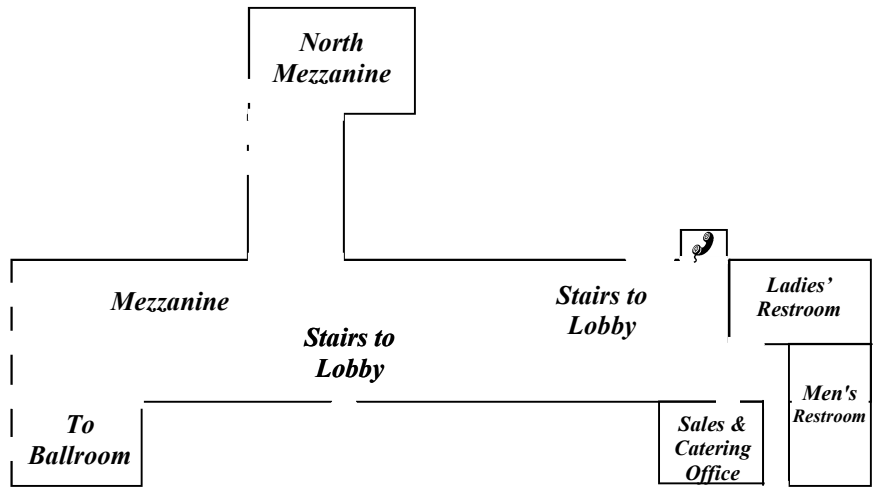
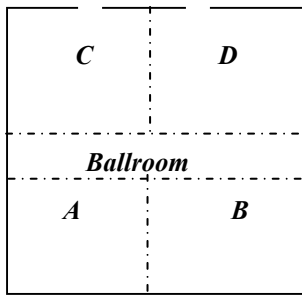
MAP OF MEETING ROOMS



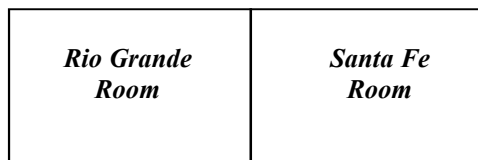
FIRST FLOOR



SECOND FLOOR



THIRD FLOOR



Diagrams Not to Scale



FAR WEST PROJECT GREAT

**Socorro I. S. D. - Community Services
313 S. Rio Vista Rd.
El Paso, Texas 79927**

**Phone: (915) 937-1725
Fax: (915) 937-1795
farwestg@farwestgreat.org**

www.farwestgreat.org